



# L1&L2 PROFILES

## Product Information

### Introduction

Multipanel UK have developed 2 Aluminium systems to work alongside AlupanelXTSERIES products to produce exceptional external cladding.

L1, is designed to be used with folded cassettes and features a special hinge system to fix them to aluminium carriers.

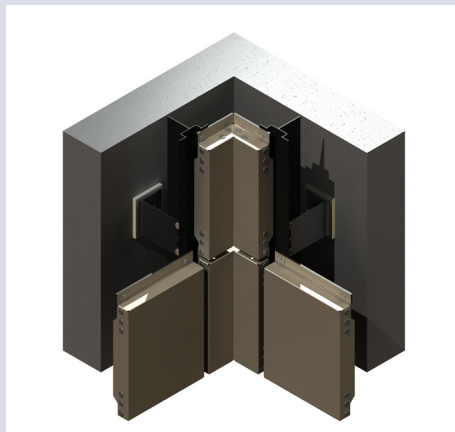
L2, is designed to install flat panels on the wall using adhesives or mechanical fixings.

Each system provides an extremely strong, long lasting solution to all cladding requirements.



### Advantages:

1. Easy regulation of distance from the wall.
2. Invisible fixings
3. All aluminium profiles are anodized for corrosion resistance
4. Thermal expansions are taken into consideration and are fully compensated
5. Quick, easy installation

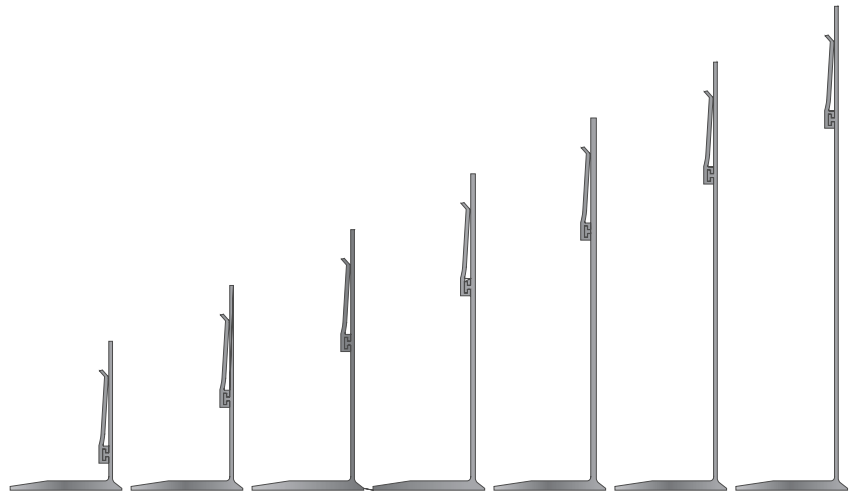




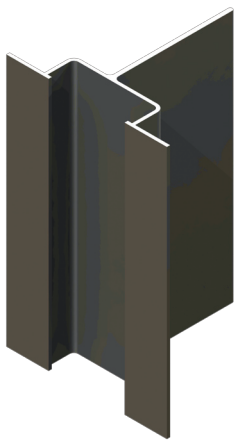
# L1&L2 PROFILES



External Wall Bracket  
(L1 & L2)



L/11.0.1 80mm   L/12.0.1 110mm   L/13.0.1 140mm   L/14.0.1 170mm   L/15.0.1 200mm   L/16.0.1 230mm   L/52.0.1 260mm



L/20.0.0  
Casette Carrier  
Profile  
(L1 & L2)

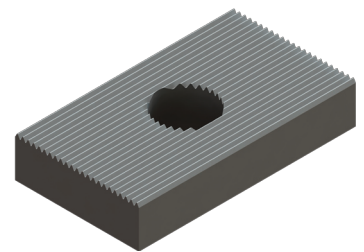


L/22.0.1  
Casette Slider  
Profile  
(L1 only)

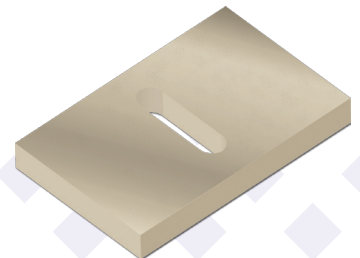


L/21.0.1  
Casette Fixing  
Tube  
(L1 only)

L/23.0.1  
Enforcing  
Washer  
(L1 & L2)



L/59.0.0  
Bracket  
Insulator  
(L1 & L2)



CALL **+44 (0) 1392 823015**  
FOR MORE INFORMATION OR TO CONTACT YOUR LOCAL SALES MANAGER /  
DISTRIBUTOR

[www.multipaneluk.co.uk](http://www.multipaneluk.co.uk)